



Prescription Safety Eyewear Reference Guide



SafeVision

Visit [SafeVision.com](https://www.safevision.com) to learn more!

BY HOYA

PROGRAM MANAGEMENT

SafeVision has continuously provided comprehensive eye protection products and programs for over 75 years. We are the leading manufacturer of safety prescription eyewear in North America.



Why safety prescription eyewear?

OSHA regulations require employers to ensure that employees have appropriate eye or face protection if they are exposed to potential hazards. General dress eyewear (streetwear or non-safety frames) does not meet the ANSI Standard for Safety Prescription Eyewear. The ANSI Z87.1 Standard specifies that safety prescription eyewear meet stringent design, structural and lens retention requirements.

All SafeVision safety prescription eyewear has been tested to and meet the requirements of ANSI Z87.1.

Establishing an effective safety prescription eyewear management program

SafeVision offers industry-leading management programs with our innovative administrative tools and comprehensive dispensing services network. Our sales and marketing teams are trained to help you establish a unique set of options customized to your needs. We can also help you implement your program in a timely fashion.

Critical components of program administration

Control Help you control the management of your program options and costs

Inform Provide tools to help inform your employees about program details

Instruct Communicate key parameters to the Eye Care Professionals that provide fitting services to your employees

We can provide you with multiple levels of capabilities that give you easy access to custom order forms using our program's realtime product database.

Planning a Comprehensive Safety Prescription Eyewear Program

Successful implementation of an eye protection program starts with proper planning and clear understanding of your organization's safety requirements. Our process will help you get started.

We have a comprehensive database that communicates your program information to your employees and the Eye Care Professionals servicing your organization.

Our invoices contain all the information you require, in an easy-to-use format – this helps you monitor and measure the cost effectiveness of your program.

In addition, we provide timely and detailed reports to help you audit your program performance and to assist with your compliance monitoring responsibilities.

You can rely on the SafeVision sales team to help you customize a unique set of options that meets your requirements and reduces your administrative burden. Once you have completed a hazard assessment and identified tasks that require eye and face protection, we can explain the features and benefits of our frame and lens options to help you select products to meet your needs.



PRODUCT ASSORTMENT



Lenses and Treatments – The Latest in Design and Technology

The SafeVision program offers the latest in HOYA lens technology. Lens options include Single-Vision, Bifocals, Trifocals and No-line Bifocals, commonly referred to as Progressive Addition Lenses (PALs). We offer the latest technology in digital surfaced PAL designs.

We highly recommend Phoenix lenses when weight and chemical resistance are important and Polycarbonate lenses for general high impact protection. Safety eyewear made with Polycarbonate or Phoenix lenses, meets ANSI Z87.1 requirements for impact-resistance. Glass and Plastic lens materials are not impact rated.

Numerous lens options exist, including photochromics and polarized sunlenses. Treatments can enhance lens durability, improve visual acuity and increase performance. We offer treatment options to enhance scratch protection, increase ease of cleaning and resist fogging.



Comprehensive Selection of Frame Styles

The SafeVision frame collection features a wide range of styles, from fashionable sport eyewear to stylish and well-fitting eyewear designs in a variety of materials, shapes and sizes.

We provide plastic frame styles made from non conductive materials. We also offer frames made with hypoallergenic stainless steel a material known for its light weight, durability and corrosion resistance. Our frames have a variety of fitting characteristics to improve comfort, including soft adjustable nose pads, comfort nose bridges and adjustable-length temples. We also have a collection of sealed frame designs that provide extra protection in dusty and dirty environments.

Our sideshields are designed to provide lateral coverage while optimizing fit and comfort. Most frame styles are offered with removable or permanent sideshield options.



SERVICE

Customer Excellence

Our modern manufacturing facility has the latest in optical manufacturing equipment and customer service communication systems are staffed by an experienced and dedicated team.

Getting the right eyewear to your employees on time is something we take very seriously. We have invested heavily in the latest automated digital-processing equipment to ensure that prescriptions are produced accurately and quickly.

In addition, we offer a full warranty on all eyewear produced.

Our sales team is experienced and can ably counsel you on how to establish an optimum eye protection administration program. We have a sales support group that will assist with setting up your customized program so that your needs can be efficiently communicated to our network of Eye Care Professionals. To ensure an effective start-up campaign, our sales support team will contact you to discuss any questions you may have, and after your first invoice, we will reach out to your designated accounts payable contact to ensure that everything on our invoices is to your satisfaction.

Dispensing Services

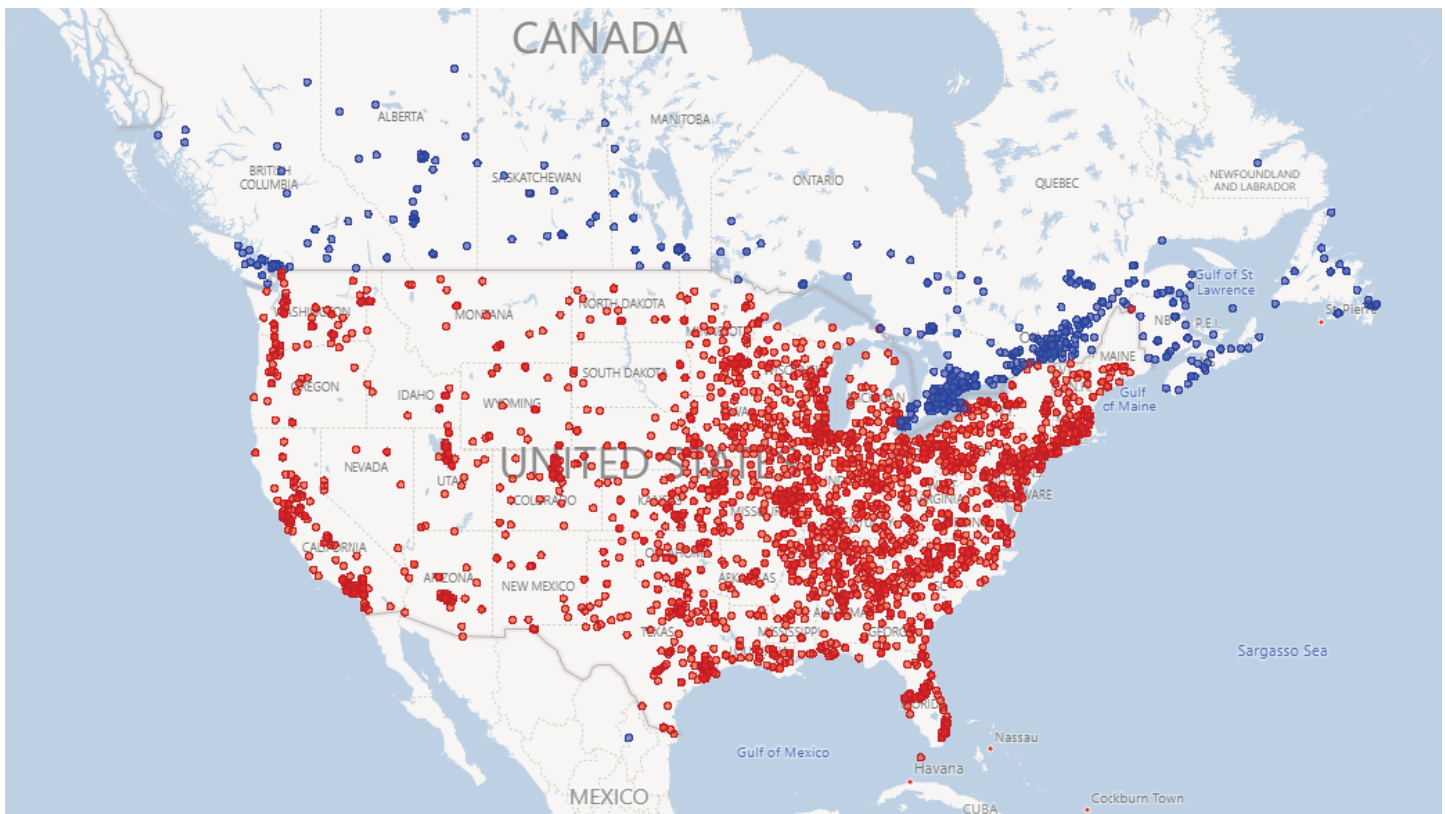
Optical dispensing by a professional is critical to any safety eyewear program. Measuring the correct fit and adjusting for safe usage ensures the eyewear is appropriate for the industrial application. It should not be left to an algorithm.

SafeVision offers two types of eyewear fitting (“dispensing”) services depending on your needs. We want to make sure that each pair of glasses is properly measured and fit for each of your individual employees.

We can provide off-site dispensing services through our vast network of more than 3,500 Eye Care Professionals (ECPs). On-site dispensing services, provided by SafeVision contracted opticians, may also be available for qualifying accounts.

Simplified, Competitive Pricing

Choose from one of our simplified pricing packages and we can also tailor to fit your company’s requirements. With SafeVision’s safety program administration services there are no hidden fees.



SafeVision’s network of Eye Care Professionals (ECPs)

LENS OPTIONS

SafeVision designs utilize Hoya's free-form backside surfacing technology to optimize lenses for all prescriptions. This also allows for a wide range of materials and colors to offer the greatest selection of lens options for safety eyewear requirements.

SafeVision 1 Basic No-Line Progressive

Design Features:

- Enable your eyes to make smooth, gradual movements when you change your focus from near to intermediate to far vision
- Unlike bifocal lenses, SafeVision 1 lenses eliminate the line that creates an abrupt, annoying vision change from near to far vision

Available Designs:

- 19mm fitting height
- 14mm fitting height

SafeVision 2 Enhanced No-Line Progressive

Increased visual acuity for distance, intermediate & close range

Design Features:

- Customized for your prescription
- Vivid and sharp viewing ranges
- Wide, stable and natural vision
- Fluid transition between near and distance viewing

Available Designs:

- Standard: Variable corridor length based on seg. height specified by optician
- Wrap: Variable corridor length based on seg. height specified by optician

SafeVision 3 Maximum No-Line Progressive

The very best vision for distance, intermediate & close range

Design Features:

- Customized for your prescription
- Noticeably sharper viewing zones
- Clearer peripheral vision with wide, stable and natural vision at all distances
- Superior ergonomics creating natural, comfortable viewing and head movement

Available Designs:

- Standard: Variable corridor length based on seg. height specified by optician
- Wrap: Variable corridor length based on seg. height specified by optician



- Hoya's **Binocular Harmonization Technology** -

This patented technology takes into account the difference between the right and left eye as individual components to calculate the optimal lens design to ensure your eyes work perfectly together.

Ergonomic Workstation Design

For computer users & employees who engage in visually-intense work

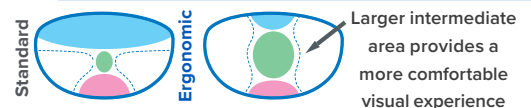
Design Features:

- Relieve eye strain and health problems related to Digital Eye Strain
- Delivers exceptionally wide intermediate and near viewing zones with a minimum distance field of view

We highly recommend adding our blue light filtering treatment, Rechargesm

Available Designs: 18mm fitting height

- EWD40: 40% of near Rx at the fitting point
- EWD60: 60% of near Rx at the fitting point



Single Vision

Lined **Bifocal**

Lined **Trifocal**

LENS MATERIALS

Phoenix is a superior material that is tough enough to withstand virtually anything your employees and workplace can dish out.

Phoenix

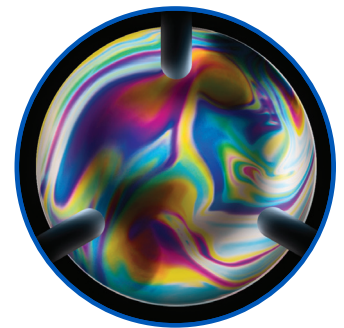
Material Features:

- High Impact resistance rating per ANSI Z87.1
- 60 times more impact resistant than standard plastic
- Twice as scratch resistant as polycarbonate
- Provides 100% UVA and UVB protection
- Temperature resistant
- The lightest lens material available today
- Tough against harsh chemicals and solvents which typically crack polycarbonate lenses
- Higher Abbe value of 43 vs. 30 for polycarbonate, which means less color distortion in the periphery of the lens

Lens comparison as viewed through an illuminated polarized filter



Phoenix

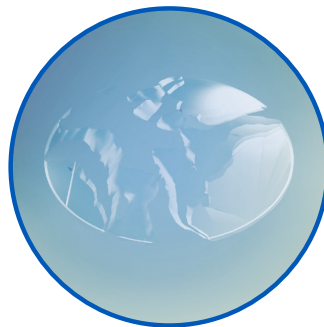


Polycarbonate

Phoenix withstands the impact from a 1/4" diameter steel ball traveling at over 100 mph



Phoenix



Other Lenses

Chemical Resistant: Harsh chemicals like ammonia, acetone and ethyl alcohols are known to attack polycarbonate lenses and cause cracking. The cracking and/or fogging typically emanates from the edge of the polycarbonate lens and can occur rapidly. Cracked lenses are a hazard because they do not have their original impact strength. They are not compliant to the ANSI standard. Employees should be encouraged to report and replace eyewear with cracked lenses immediately. That is why we highly recommend Phoenix lenses over polycarbonate.

Polycarbonate

Polycarbonate lenses are thinner and lighter than regular plastic lenses.

Material Features:

- Impact Resistant
- Light
- UV Protection

SafeVision lenses can be made with various treatments to enhance the protection of workers from the hazards of blue light, glare, and treatments to enhance the protection of workers from the hazards of blue light, glare and varying light conditions.

TREATMENTS

RECHARGE

Recharge is premium anti-reflective treatment with the added benefit of blue light filtration. Blue light is emitted by back-lit digital screens and is linked with eye fatigue.



SUPER HiVISION

EX3

Using Super Premium Anti-Reflective (AR) technologies, Hoya has created the most extreme AR product available on the market which outperforms glass.



HiVISION

An oleophobic treatment with added scratch resistance on both the front and back of the lens.



ANTI-REFLECTION with ANTI-FOG

Anti-reflective front side with an anti-fog back side.



Anti-Fog treatments work well with any frame style, but it is particularly effective at reducing the possibility of fogging with frame designs that feature close fitting or sealed design.

Some examples include:



ZT100



ZT200



Maxim Air Seal Rx



Eagle



V1000



ZT25 Sealed



ZT35 Sealed



ZT45 Sealed



ZT400 Sealed



ZT500G

CLEAR AWAY EASY CLEAN with ANTI-FOG

Oleophobic front side with an anti-fog back side.



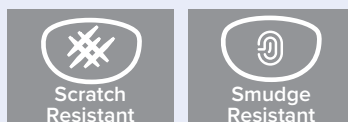
ANTI-FOG

Anti-fog front and back side



CLEAR AWAY EASY CLEAN

Oleophobic front and back side



CLARITY SHIELD

Anti-scratch front and back side



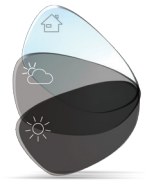
SUNGLASSES

Glare is everywhere. It is reflected from the water, snow, even roads and buildings. Driving can be even more hazardous as glare creates blinding light – limiting visibility and causing serious eye strain. SafeVision offers a wide variety of sunlasses to address these conditions and combat harmful UV light exposure.

Variable Tint Indoor-Outdoor Technology

Features:

- Light reactive lenses that are clear indoors and darken outdoors
- Excellent contrast and glare reduction with deep, natural colors
- Exceptional optical quality and durability
- Wide range of application to digitally processed free form no-line performance designs
- Available in GRAY and BROWN



Polarized

Features:

- Customized for your prescription
- 100% UVA and UVB protection and 99% reduction in blinding glare
- Provide the clearest and sharpest vision in bright daylight and high glare conditions
- Available in GRAY and BROWN



Tinted

Features:

- Clarity and crispness of color are unbeatable
- BROWN: adds contrast, allows more visible light (driving, outdoor occupations, golf, skiing, boating and overcast days)
- GRAY: a neutral color that provides truer color perception than other sunlens colors (water, boating, full sunlight conditions, a general purpose color)



Mirrors

Features:

- GOLD and SILVER - Perfect for hot and bright days where surfaces like snow, sand, asphalt or concrete reflect sun
- GOLD mirrors make lenses cool feeling and cool looking because they absorb infrared. They are recommended for high altitude sports like mountain climbing, hiking or alpine skiing
- SILVER mirrors reduce UV and visible light by blocking very bright reflected light - they are recommended for water sports and driving
- BLUE mirrors provide a great look and reduce blue light transmission. Great for all outdoor activities



FRAMES

PENTAX

At SafeVision we design and source our own Pentax safety frames. That means consistent inventory which helps ensure your workers get their prescription eyewear faster and spend less time without eye protection. Our wide selection of classic, metal or wrap designs are sure to fit any workforce. See our full frame guide for details.

D490

- Classic unisex styling
- Spring hinge for long term wearing
- Adjustable temple tips to keep the frame secure on workers head



ZT25-6 & ZT25-8

- Stylish sunglass-like wrap design for work, sports and outdoor recreation
- 6 base and 8 base versions available for a wide range of prescriptions
- Hi-visibility reflective temples for added safety at dusk or dark
- Closed cell foam seal around eye orbit for protection from dust & debris

ZT100

- Industrial look with versatility
- Adjustable temple length & noespads for better fit & comfort
- Swivel temple tips
 - Worn as normal for light duty
 - Wrap around the ear for more rugged jobs
- Permanently attached sideshields to meet plant requirements
- Metal mesh venting sideshields for fog reduction
- Three sizes to best fit the widest range of workers



ZT200

- Soft-touch temple tips
- Soft-touch adjustable nose pads for proper optical fitting
- Replaceable foam brow guard for protection from falling dust & debris
- Hi-visibility reflective temples for added safety at dusk or dark
- Clear or tint lens carrier for clear peripheral vision or reflection reduction
- Removable lens carrier to change from clear to sunglass lenses

TRX

- Stainless steel construction
 - Lighter weight and more durable than Nickel-Silver
 - Lower risk of skin reactions
- Adjustable nose pads and temple tips to get the best fit for optics and gaps
- Spring Hinge for comfortable long term wear
- SteelShield metal mesh sideshields available in matching colors



Classic 56

- Safety meets style with this classic design
- Tough thermoplastic polymide frame with soft rubber nose pads
- Featuring the first anti-reflective sideshields for clearer peripheral vision!



GT20 Goggle

- Meets ANSI Z87.1 splash, dust & fine dust rating - D3, D4 & D5
- Soft, latex free, goggle seal
- Wide, elastic head strap fits all workers comfortably
- Impact rated polycarbonate shield with anti-scratch & anti-fog coatings

ANTI-FOG SPRAY

Our new Anti-Fog sprays & wipes are specially formulated to outperform store-bought solutions and safe to use on all prescription lens coatings! Prevents fog on all lenses and devices due to heat, cold or high humidity. Keep your eyeglasses from fogging when wearing a facemask or tight-fitting eyewear!

SV Antifog 30ml Spray KIT

Includes: (1) Spray Bottle, (1) Cleaning Cloth, (1) Carrying Pouch, (1) Retail box
 Application: up to 300 sprays
 Carton: 35 units

Anti-Fog 30ml Spray Bottle

Single unit includes: (1) Spray Bottle
 Application: up to 300 sprays
 Carton: 60 units

Anti-Fog 15ml Dropper Bottle

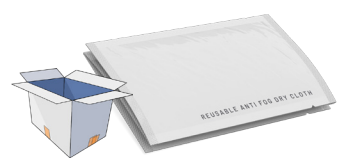
Includes: (1) Dropper Bottle
 Application: up to 100 drops
 Carton: 40 units

Anti-Fog Dry Wipes (5 Pack)

Includes: (5) Dry Wipes, (1) retail package
 Application: up to 10 uses per wipe
 Carton: 40 units

SV AntiFog Dry Wipe (Bulk 100)

Includes: (100) Dry Wipes
 Application: up to 10 uses per wipe
 Carton: only available in full cartons of 100 units



SPRAYS/DROPS DIRECTIONS:

1. Clean lenses for best application
2. Apply a spray or two of the Anti-Fog solution
3. Wipe off residual liquid with a microfiber cloth

DRY WIPE DIRECTIONS:

1. Clean lenses for best application
2. Breath on lens to develop moisture which will activate the Anti-Fog solution
3. Gently buff lens with Anti-Fog dry cloth; no residual to remove
4. Fold and replace into pouch for reuse (each cloth can be used up to 10 times)

Warranty, Policy & Procedures

USA Effective April 1, 2024

PRESCRIPTION POLICY

SafeVision urges employees to visit their Eye Care Professional annually to ensure their prescription is accurate and their eyes are healthy. As part of our focus on the health and safety of the workforce, SafeVision recommends annual checkups, but requires that all eyewear prescriptions be less than two years old.

HAZARD ASSESSMENT POLICY

It is the responsibility of the plant owner or safety director to conduct a hazard assessment for the workplace and determine the appropriate eyewear protection required for each job. SafeVision offers a wide selection of frames, lenses, and coatings for review by plant officials.

WARRANTIES

At SafeVision, we stand behind our quality and service 100%. Our goal is to consistently provide exceptional service and quality products at the best value. To meet this goal, we have structured our policies to be flexible and responsive to all your safety eyewear needs. All lens, coating and frame warranties commence at the ship date. Coverage is listed below. All warranties are null and void in the event of improper care or abuse.

Product	Covered	Months	Product	Covered	Months
Phoenix Lenses	Defects & Scratches	24	Polycarbonate Lenses	Mfg. Defects Only	12
HOYA Recharge	Defects & Scratches	24	HOYA ClearAway Easy Clean	Defects & Scratches	12
HOYA Super Hi-Vision EX3	Defects & Scratches	24	HOYA Clarity Shield	Defects & Scratches	12
Hi-Vision	Defects & Scratches	24	HOYA Anti-Fog (AF) Coating	Mfg. Defects Only	12
			HOYA Anti-Reflective (AR) with Anti-Fog (AF)	Defects & Scratches	12
			PENTAX & SafeVision Branded Frames	Mfg. Defects Only	12

PRESCRIPTION & FRAME CHANGES

RX & FIT CORRECTIONS

SafeVision will remake an order due to a change in the employee's Rx or lens style per their eye doctor one time, at no charge. The change must be within three months of the ship date and within the original invoice amount. More expensive replacements will be charged the price difference.

CANCELLATIONS

If the order is not yet in process, usually within 12 hours, cancellations or Rx changes can be made at no charge. If the order is already in process, any Rx changes will be considered as the one-time fit correction listed above. If the order has shipped, no credit will be issued.

EMPLOYEE PREFERENCE CHANGES

Changes due to employee preference are not warrantied but will be accommodated one time per order for Pentax & SafeVision frames only. Employees must keep the company-paid first pair. If within three months, the employee wishes to purchase a more preferred pair, it must meet the company profile. A 50% discount off the employer's price will apply. The employee is responsible for the cost of the new pair at the time of order.

LAB REMAKES

SafeVision will remake any lab errors if within three months of the ship date and within the original invoice amount. More expensive replacements will be charged the price difference.

REPLACING LENSES UNDER WARRANTY

If a request for warranty replacement of frame is made due to a manufacturer defect, we will remake a complete pair if a Pentax or SafeVision branded frame was used on the original order. If an outside vendor frame was used on the original order, SafeVision requires the frame be returned to our lab for inspection and lens insertion. Insertion of safety lenses is considered part of the manufacturing process.

REPLACING FRAMES UNDER WARRANTY

If a request for warranty replacement of frame is made due to a manufacturer defect, we will remake a complete pair if a Pentax or SafeVision branded frame was used on the original order. If an outside vendor frame was used on the original order, SafeVision requires the frame be returned to our lab for inspection and lens insertion. Insertion of safety lenses is considered part of the manufacturing process.

USER SUPPLIED FRAMES

SafeVision will not warranty any lab breakage of a previously used, employee supplied frame. All user supplied safety frames must be marked with Z87-2+ on the frame, per the ANSI Z87.1 Standard for Rx spectacles.

EMPLOYEE CO-PAY

SafeVision does not accept personal checks or money orders for employee co-pay orders. A credit card secured through SCCID must be used.

AWAITING REPLACEMENT EYEWEAR

Employees waiting for their replacement safety eyewear should consult their company for recommended temporary eye protection. Damaged frames or lenses should not be worn in the workplace as they can compromise the safety of the employee. Any warranty replacement claim should be made through Customer Care at 800-982-2828. A Return Material Authorization (RMA) number will be assigned.



SafeVision

BY HOYA

Corporate Offices: 397 TX HWY 121, Lewisville, TX 75067
 Laboratory: 7000 Sunwood Dr NW, Ramsey, MN 55303
 1.800.982.2828
safevision@hoya.com